



# SIGNALS

Spring 2021 edition

## CHAIRMAN'S ADDRESS

Finally there is light at the end of the tunnel and as things stand June should see a return to something resembling pre-COVID conditions. Shortly we shall be able to socialize in small groups and already there is talk of an easing of holiday travel in May. For our part SoGA plans when conditions permit to organise an evening get together upstairs in The Steam Packet.

SoGA has held regular Zoom committee meetings when local planning and traffic issues have been the main items on the Agenda.



### **SOTG/RV/CS/FR AREA TRAFFIC MEASURES.**

There is considerable discussion being expressed locally about the disparity of traffic measures in the area comprising **SOTG/RV/CS/FR**

#### **PROPOSAL**

**SOTG** is one of four CPZ within an area roughly bounded by Sutton Court Road the A4 the River and the A316. The other three CPZ are **CS** Hartington **RV** Riverview and **FS** Fauconberg.

Whilst being virtually a self contained area none of the four have a common traffic policy under Lbh's current Traffic Measures.

**SOTG** cannot use Hartington Road northbound.

**CS** cannot use Thames Road to go to or come from Kew Bridge.

**RV** being between cameras can use both Hartington and Thames Road.

**FS** can use neither.

None of the four cpz can exit onto the A4 via Harvard Hill as It is closed off to outgoing traffic.

#### **NOTE**

*Elmwood Road is historically in the GP zone but would be included under this scheme.*

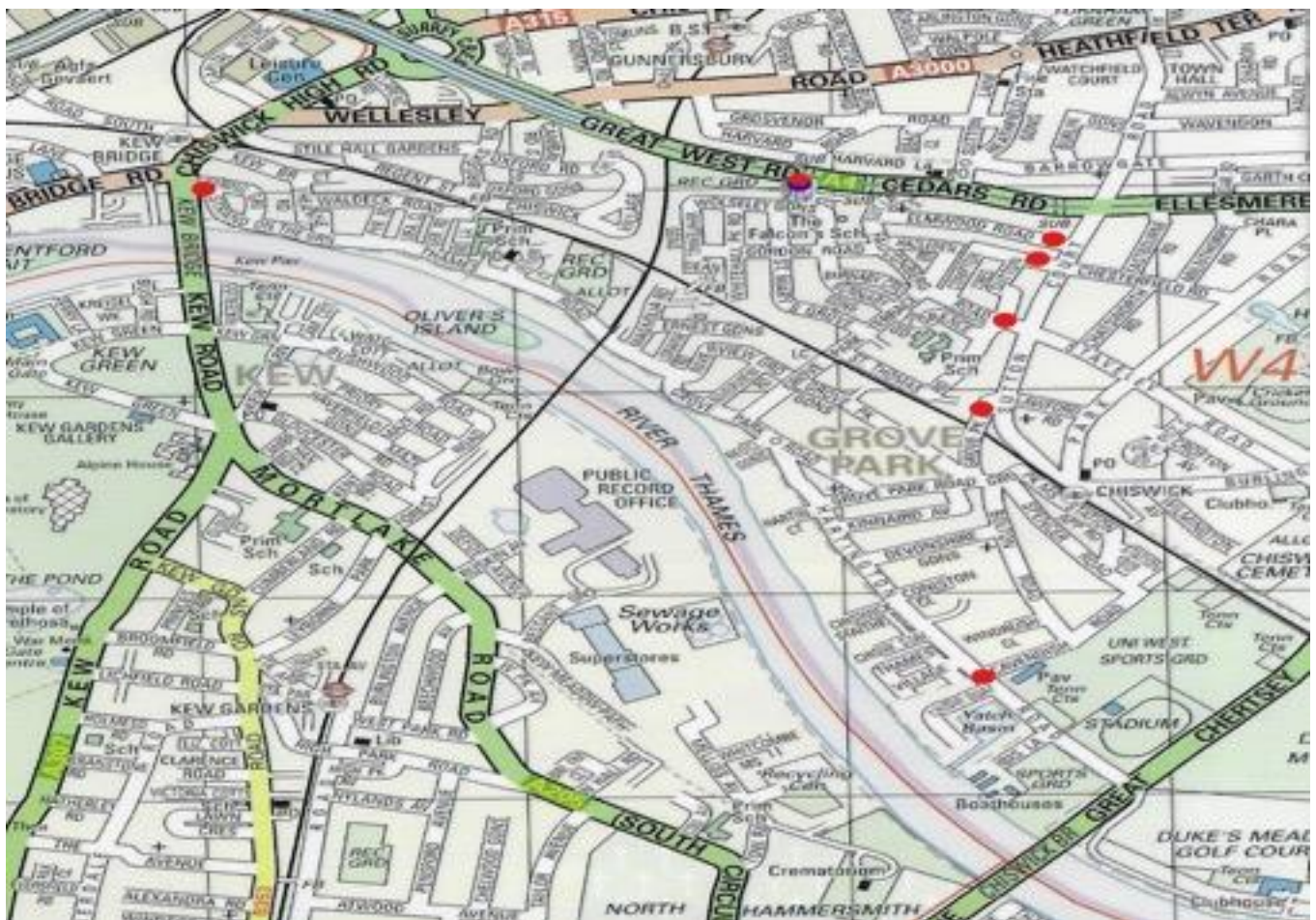


**SOGA proposes an amalgamation of this area into one benefitting from the same traffic measures and controlled by timed ANPR cameras (red dots) as per attached map.**

With time controlled cameras linked to ANPR (Automatic Number Plate Recognition) at the following points: Kew Bridge / Hartington Road / Sutton Court Railway Bridge / Fauconberg Road / Elmwood Road and Harvard Hill the area becomes one whilst retaining their separate CPZ designations but benefitting from common traffic measures whilst remaining open to visitors deliveries taxis and shoppers but closed to rat running and the 'access only' along Strand on the Green and Thames Road would become redundant.

SoGA has put this scheme to Lbh Traffic and subsequently discussed it in greater detail on a Zoom meeting. As the existing traffic measures are new to the area Lbh Traffic require time to assess both their impact locally and the overall effect caused from displaced rat running traffic.

COVID has had implications on the timing of both the introduction of the traffic measures and the Thames Road cameras and consequently the subsequent review which will now not be before June/July.





It is over 70 years since the first V2 was fired at London on 8<sup>th</sup> SEP 1944. Some of you may have read 'V2' by Robert Harris, the story of the development of this rocket designed by the German Wernher von Braun who later worked for the USA and is deemed by many to be the father of the Space Age. I have lived in Chiswick for 10 years and until I read this book, I had no idea that the first rocket aimed at London landed on Staveley Road – 3 dead, 21 injured, 11 houses were destroyed and a further 21 seriously damaged.. There is a small plinth almost at the end of the road on the right having come from Sutton Court Road.



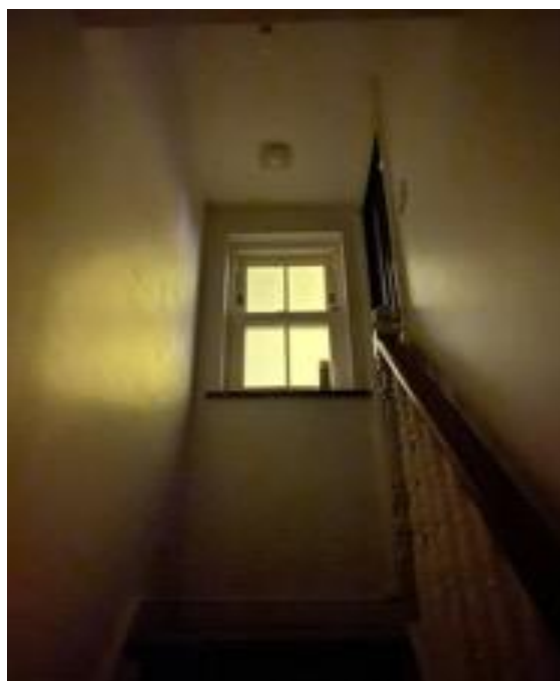
### A strange light from above



The night owls amongst us may have noticed a rather strange orange glow coming from the sky at the Western end of Strand On The Green. It turns out that unfortunately it is not the Aurora Borealis, but in fact high powered grow lights from the pitch at Brentford's new Community Stadium.

The levels of light pollution being projected into the night sky are totally unacceptable. Apart from the general nuisance caused it also poses a huge danger to the local wildlife, namely bats and stag beetles of which there were high local numbers. There is also growing evidence to suggest that LED light is increasingly damaging to our physical and mental health.

SOGA have registered a complaint with Hounslow Council but individuals will need to report the nuisance caused to them. Please do so to;  
Steven Maunders (Principal Regulatory Officer) – [Steven.Maunders@hounslow.gov.uk](mailto:Steven.Maunders@hounslow.gov.uk)



*Above Photo taken at 11.30pm in February 2021.*



*Reflections on life during this pandemic.*

What has kept me sane - walking, reading, gardening, zoom and phone calls with friends and family, zillions of box sets and films.

What has been the hardest - cumulative physical isolation from friends and family.

Seeing people not following the guidelines.

Repetitiveness and never knowing what day of the week it is!

I know how much harder life has been for some others e.g. having to home school your kids and keep them entertained all the time. Losing loved ones to the virus.

Hope is the joy and pleasure of hugging loved ones. Sitting in one of the pubs on the tow path drinking a chilled glass of white wine and socialising with anyone! What bliss!



*Growing seeds and cooking helping to keep busy and sane.*

### THIRD PLANNING APPLICATION – NORTH CIRCULAR INTERSECTION



It is some 25 years since the first application was made to redevelop what had been a bank at the intersection of the A4 and North Circular. There was a recent consultation by the developers over 3 days, for members of the public to ask questions and make comments prior to lodging the application. This third iteration is considerably smaller and lower than the previous one. It has been capped at 23 stories which is 6 more than the several tower blocks adjacent to the new Brentford Football stadium and the planned B & Q site re-development. The developers would claim

- The site has been awaiting regeneration for 25+ years
- Because the lower section of any building, say up to 25-30 metres above ground, would be so compromised by the local environment of voluminous traffic noise and pollution, the only way to generate value is by building upwards above it.
- Although the Planning Inspector's recommendation for the Curve, and the more recent Secretary of State decision on the Citroen site, would support an application for something at least as tall as the Curve, a decision was taken to make the current scheme 20 metres lower.
- A central theme to the design is its landscaping and at every third floor they have included a sizeable garden, which will allow residents to socialise/relax, stretch, interact with other residents and take a break from zoom meetings, since 'greening cities' is a key objective for all authorities
- Part of their brief was to look at how the immediate environment around the roundabout might be improved. It's hostile enough during the day but, at night, it is especially grim due, in particular, to the dismal lighting to anywhere pedestrians might pass.

Declaration of interest - I know the developer.

CLH

**BREAKING NEWS : Yorkshire holds it breath as main shipping route of pork pies is blocked !!**  
**Fred Slathwaite , Captain of the vessel, said " One minute we were fine , then a gust of wind caught us !!"**

**"Yorkshire is expected to loose as much as £3.45 a day until the carnage can be cleared , which could potentially take weeks to clear " a spokesman said .**





# The most eagerly awaited party of 2021..



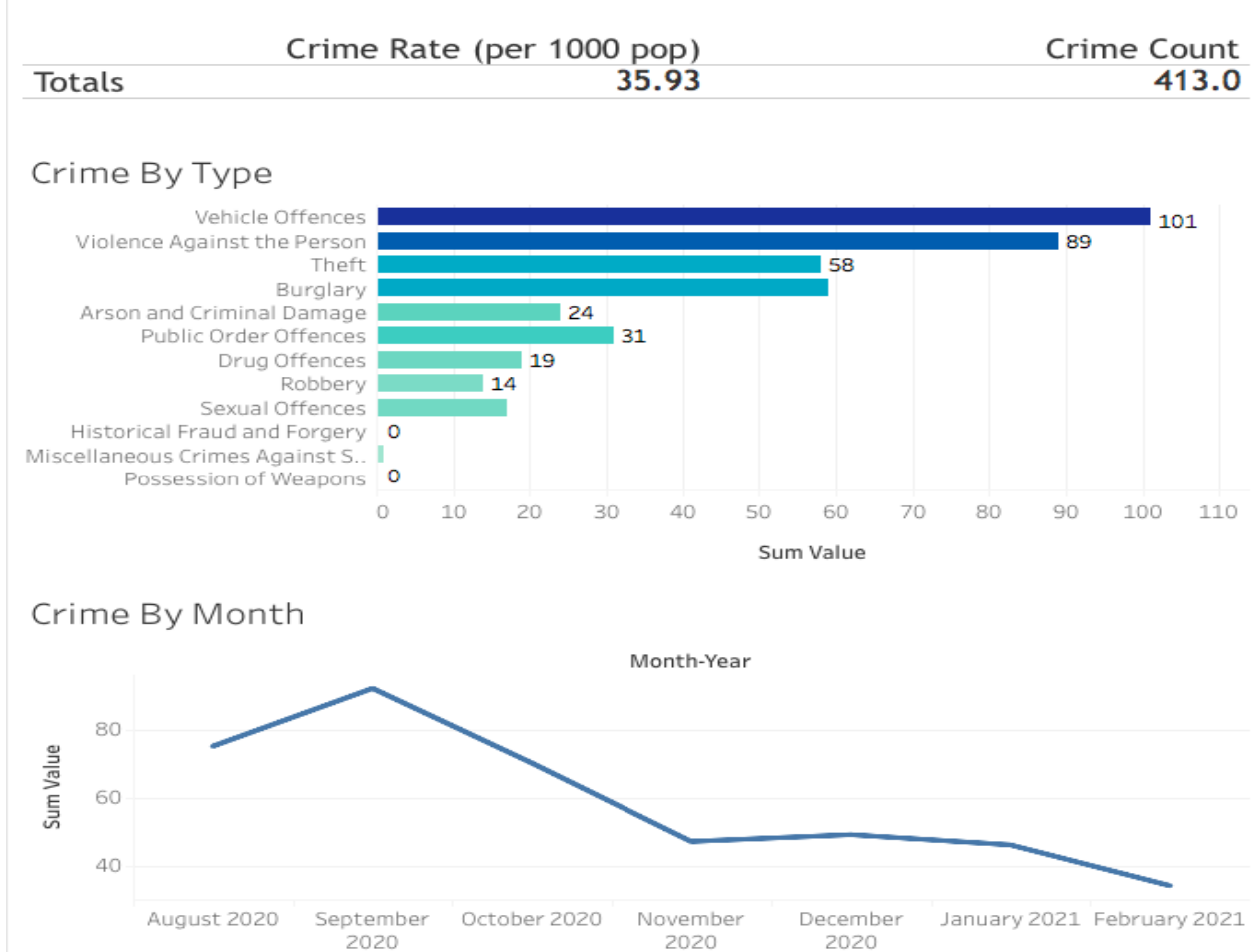
SOGA are hopeful that this  
year will provide us with an  
opportunity for a get together  
of some description.

Keep your eyes peeled for  
further details.

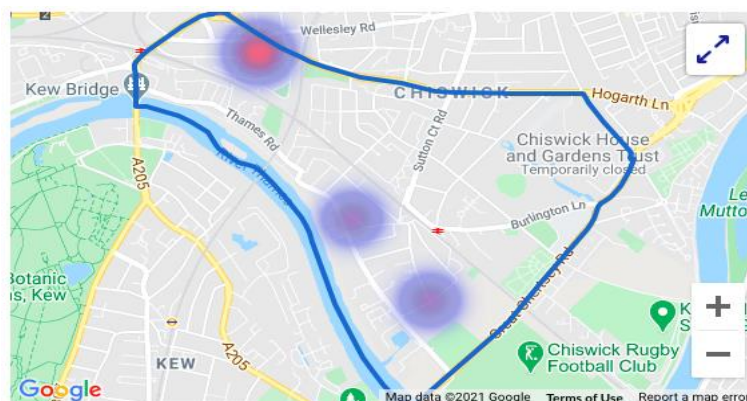
---

## CRIME

The below chart shows the latest crime figures for the months of August 21 to March 21 in the Riverside Ward.



The below map shows the burglary hotspots for the month of February.



The below link will direct you to the Chiswick Riverside page, from here you can check on local stats, voice your concerns and contact our local team. Sergeant Anil Sharma, Constable Prabhdeep Singh and PCSO Callum Norris make up the Safer Neighbourhoods Team.

<https://www.met.police.uk/a/your-area/met/hounslow/chiswick-riverside/?introducingyoursaferneighbourhoodsteam=yourteam>

## ALEX'S APIARY



The first warm weather of the year and the garden is alive with the sound of pollinators frantically searching for spring's finest offerings. Being a beekeeper has its highs and lows, as I'm sure dealing with any kind of livestock does. Up until this winter my glass was very much half full and rather ashamedly I never quite understood how beekeepers lost colonies over winter. I would read the reported average winter colony losses feeling rather smug that I had never lost a single one. Well, sadly this year I did in fact become one of those statistics losing two out of four colonies.



After a rather detailed and inspiring chat with a senior beekeeper I decided to try and adopt a slightly different approach to treating my bees for the Varroa mite going into the winter. The idea being that by routinely medicating the colonies in September they would never find a natural cure. Last September was the first time I did not treat them and in all honesty, it's possibly the last. In a world where we are all being vaccinated for Covid19 who am I to deprive the bees of a totally harmless cure to a life threatening illness.

In slightly more positive news, a great opportunity has opened up to move a couple of colonies into the Westminster University grounds off of Hartington Road. No longer will I envy the beekeepers whose lucky worker bees have a constant nectar supply at Kew gardens. I can't help but feel like this is the beginning of something special.

Alex Orski





[www.strandonthegreen.org.uk](http://www.strandonthegreen.org.uk)

<https://www.facebook.com/groups/www.strandonthegreen.org.uk>

Contact the chairman – [rsg.soga@hotmail.co.uk](mailto:rsg.soga@hotmail.co.uk)

