

SoGA



Strand on the Green Association



SIGNALS

Spring 2020 edition

CHAIRMAN'S ADDRESS

Under the current Covid-19 pandemic SoGA Committee Meetings have been suspended until further notice but we will continue to email members with relevant news.

I was delighted to see so many members turning out for the AGM. From the feedback I've received the new format seems to have been well received i.e. no guest speakers and thus being able to keep the meeting much shorter.

I have been told by the school that the defibrillator SoGA sponsored - and has now paid for - whilst not having actually been used has twice been put on standby by paramedics called to members of staff feeling unwell. Two directional signs to inform the public of its availability have been put up one on the post office and the other on Riverhomes.

Bell & Crown - members gave ready support to our campaign to have the unsightly and uncharacteristic glass box - likened by one resident to a down market bed and breakfast on the Hove seafront - removed from the pub and the planners have since REFUSED Fullers' retrospective planning application. Fullers have written to say that they will not appeal the refusal but maintain 'economics' justify their retention of the glassed in enclosure and it will be modified to meet planning conditions. However what has been installed does NOT comply with the permission which was for a retractable awning supported on three pillars. SoGA has advised Fullers accordingly and is pursuing planning enforcement for its removal.

Fullers are due to move into their new headquarters in Pier House.

The delay in opening the arch under Kew Bridge continues to frustrate but at least there are now two schemes out for consultation - one of which will be implemented.

The fountain at Strand End has a tendency to stick open resulting in water wastage and SoGA has started looking for funds to have the push button replaced.

My predecessor Robert Colvill has generously offered to establish a group of volunteers to monitor and help the housebound elderly and infirm residents. If you would care to offer your services please email Robert at: robertcolvill@me.com



A pair of Herons have nested on Olivers Island

MOBILE RADIO MAST

In early February SOGA received notice of a pre-planning consultation to install a mobile mast 20 metres high in Thames Road, immediately next to the south east corner of Kew Railway Bridge. The mast would be approximately the height of 3 street lamp. This would be to service O2 and Vodafone and would also carry 5G and we believe the need for a mast in the area partly arises from the loss of the mast at Chiswick Village. We circulated the paperwork that we had received to all members and asked for comments.

We had 16 replies and nearly all the comments were against the installation of the mast in that place with a few in favour due to poor or no mobile reception near the eastern end of Thames Road. The main objections were:

- _ Harmful intrusion on the area
- _ Concern over health risks
- _ The suggested site is a pinch point and if the mast fell it could block the road and damage buildings opposite
- _ Preference to see the mast installed on one of the tall buildings around Kew Bridge
- _ The rejection of other potential sites in the area in the consultation papers was not convincing

Details of the summary of members concern have been given to Councillor Sam Hearn. It seems fairly certain that a mast will be needed to enhance the existing signal in the area and to provide 5G coverage going forward. We will notify members when we become aware of any planning application.



Example of a 20 metre phone mast.



DOG WALKING

Many of us with dogs use the footpath and surrounding streets when walking dogs, as do other visitors to the area. There seems to be an increasing incidence of dog mess so can we please remind you:

- _ If your dog does make a mess please bag it
- _ If your dog is off the lead, and particularly if it is behind you, please keep an eye on rather than "pretending" that the dog doesn't belong to you if it makes a mess.
- _ Once you have used the bag please take it to an appropriate bin, at either end of the footpath or take it home for disposal; it is not acceptable to leave the bag on the ground or hanging from railings or walls. There are also specific bins in the Rec.

Many dog owners use the Rec when exercising their dogs. The park is gated and therefore well behaved dogs can be let off while in the park. There have been a number of instances of people leaving the gate open which has allowed a dog to run off which is dangerous both for the dog and for traffic in Thames Road if a car has to take evasive action. If you use the Rec for any reason can you please ensure that you shut the gate properly both on entering and leaving. The concerns equally apply to young children who could easily run out if excited and running ahead of their parents.

Finally, it is essential that dog walkers are in control of their dogs at all times. Nearly all the dogs around here seem to be well behaved but if there is any doubt then the dog must remain on its lead.

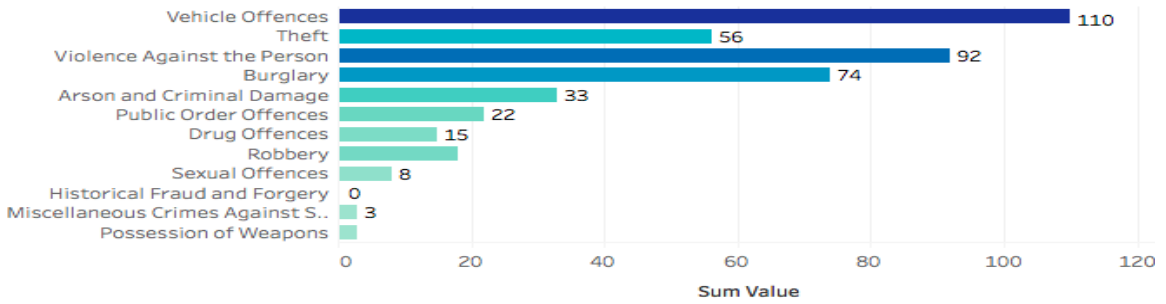
CRIME

The below chart shows the latest crime figures for the months of September 19 to February 20 in the Riverside Ward.

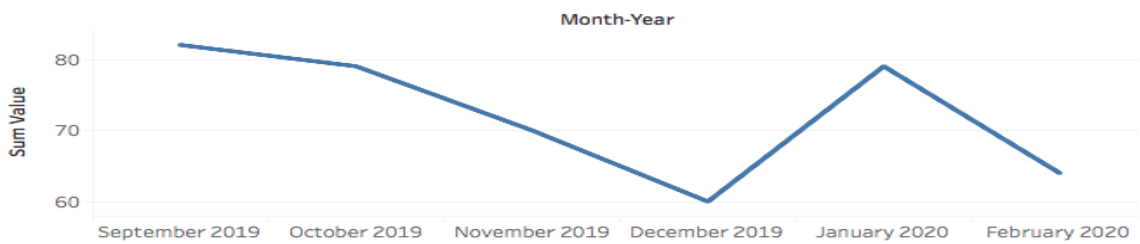
Chiswick Riverside

Totals	Crime Rate (per 1000 pop)	Crime Count
	37.76	434.0

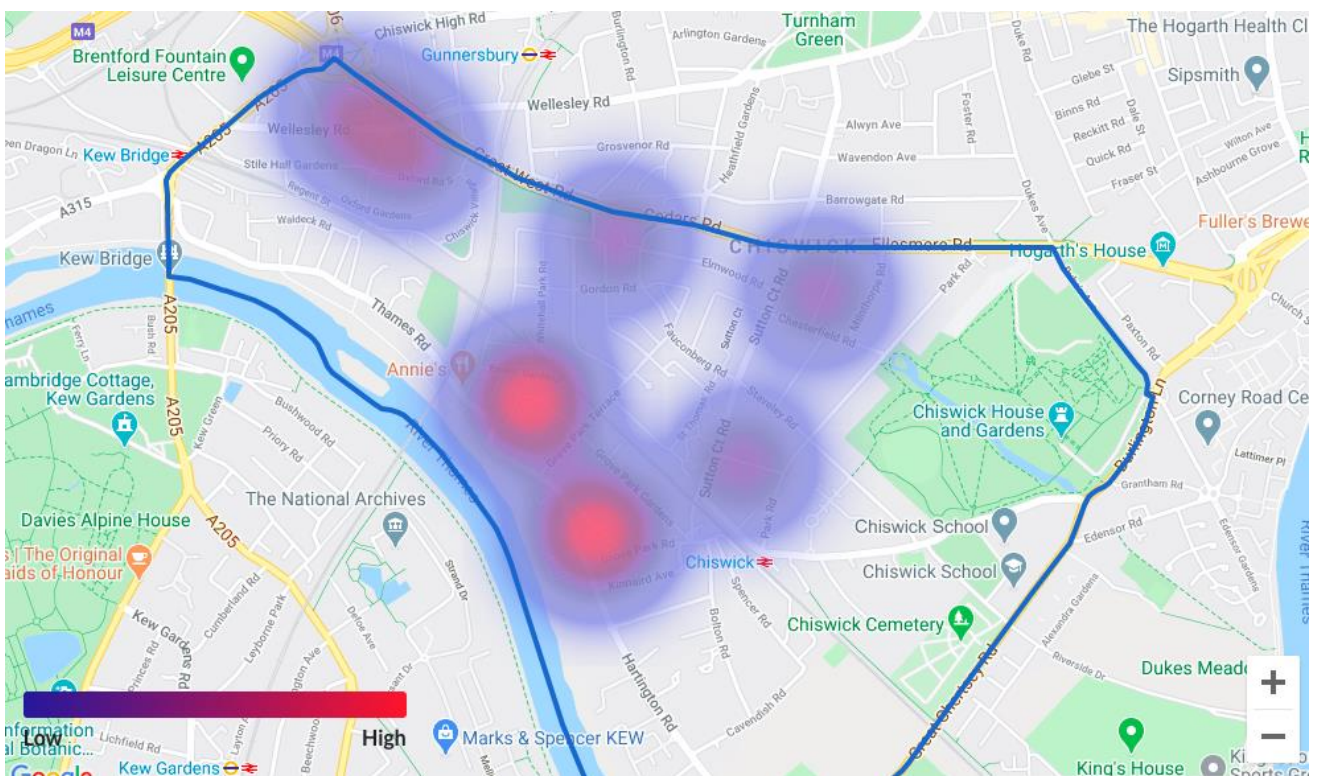
Crime By Type



Crime By Month



The below map shows the burglary hotspots.



CRIME PREVENTION ADVICE

As with most wards in Chiswick, burglary does seem to be somewhat of a local concern.

The most common entry point is reportedly through front, side and rear doors.

The following measures can be used to help prevent becoming a victim.

- Keep front boundaries low so burglars have nowhere to hide.
- Secure side gates with locks.
- High side and rear boundaries with trellis and spikey planting.
- Gravel driveways and paths make it harder for a silent approach.
- External security lights.
- Intruder alarms or battery powered shed alarm.
- Secure sheds and keep ladders and tools out of reach, burglars will often use tools from the shed to help them break in.

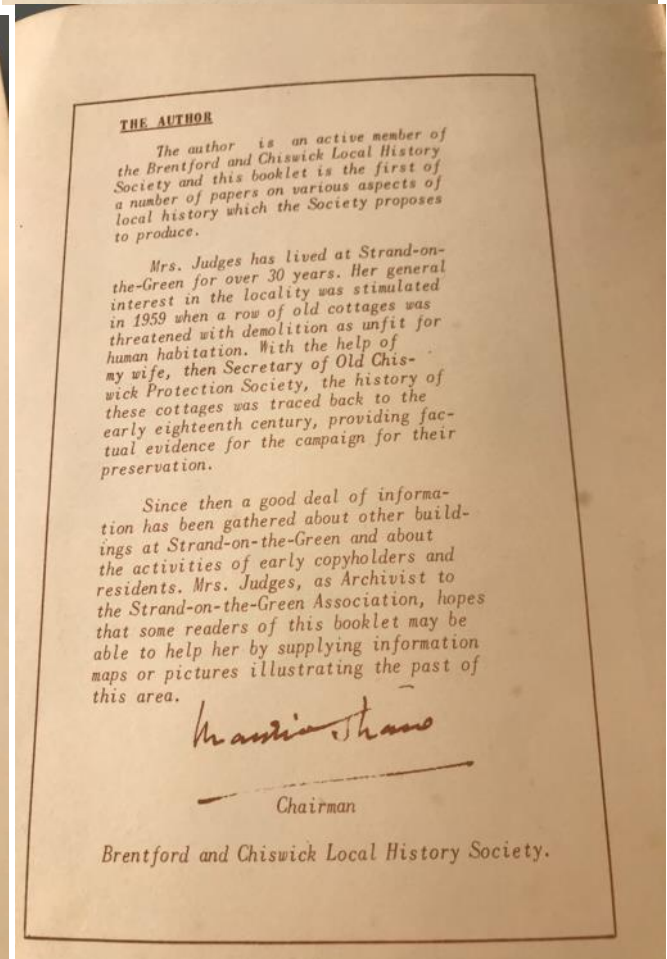
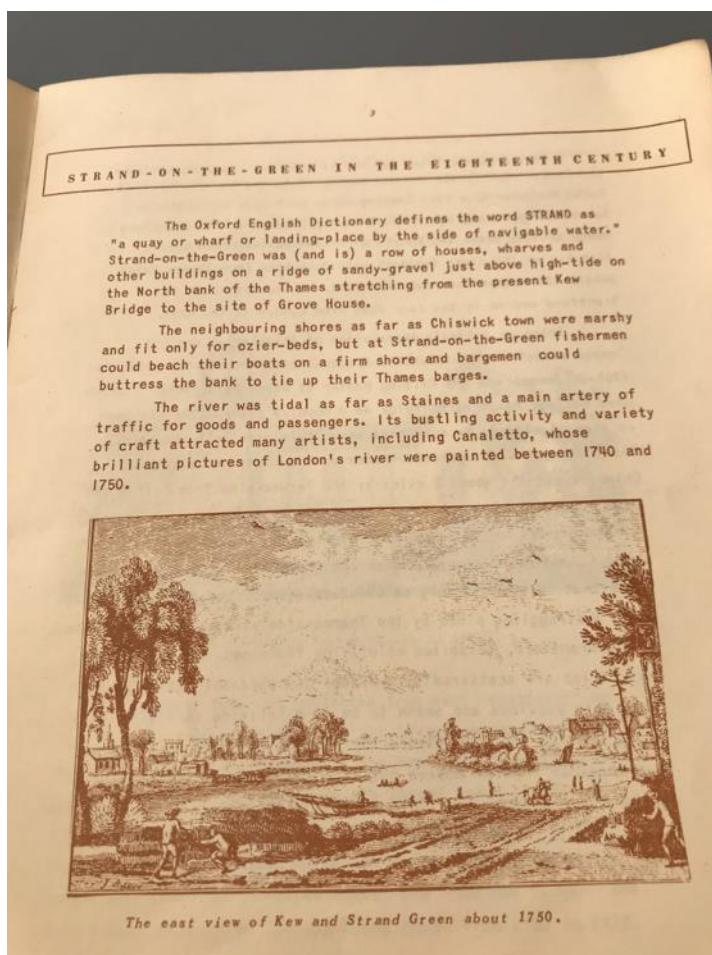
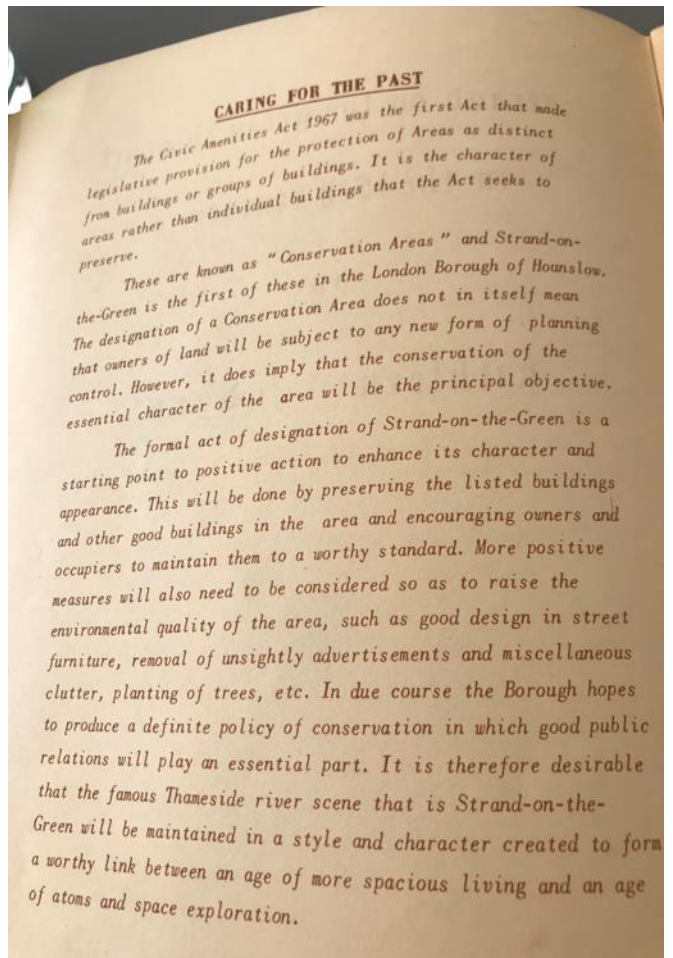
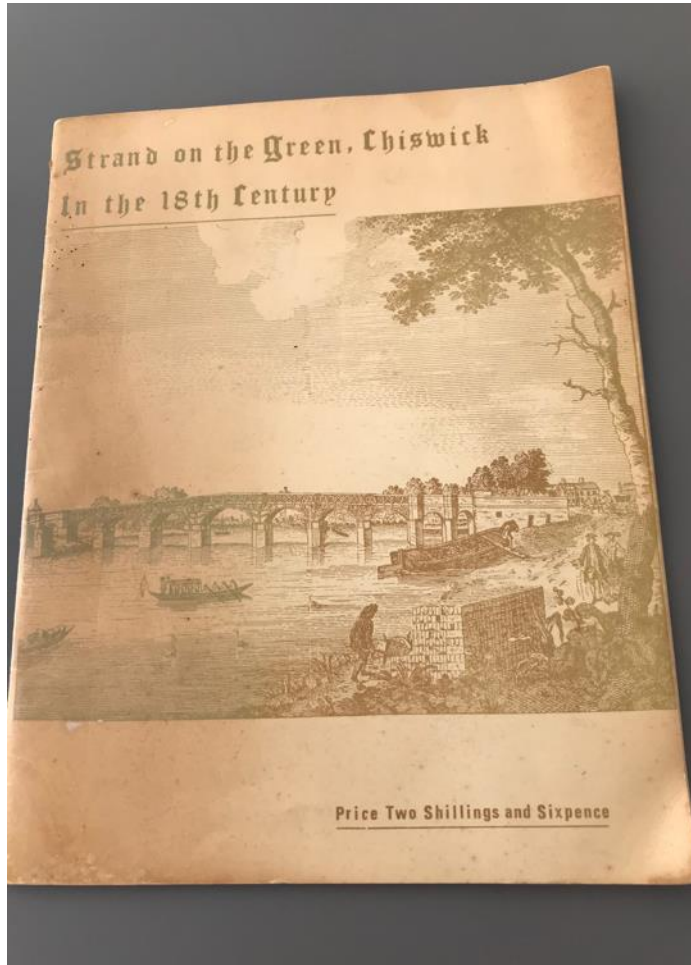
Here is a list of spikey shrubs that could be planted along boundaries or access points. Mature or semi mature shrubs will be more effective and can prove to be quite the deterrent.

- | | |
|---------------|---------------------------------|
| - Berberis | - Eleagnus |
| - Osmanthus | - Robinia |
| - Forget | - Colletia |
| - Poncirus | - Ilex |
| - Crataegus | - Climbing roses |
| - Pyracantha | - Maclura |
| - Aralia | - Mahonia |
| - Chaenomeles | - Ligustrum (privet), or laurel |
| - Ribes | - Smilax and Xanthoxylum |
| - Oplopanax | |

The below link will direct you to the Chiswick Riverside page, from here you can check on local stats, voice your concerns and contact our local team. Sergeant Anil Sharma, Constable Prabhdeep Singh and PCSO Callum Norris make up the Safer Neighbourhoods Team.

<https://www.met.police.uk/a/your-area/met/hounslow/chiswick-riverside/?introducingyoursaferneighbourhoodsteam=yourteam>

SOMETHING FROM THE PAST



ALEX'S APIARY



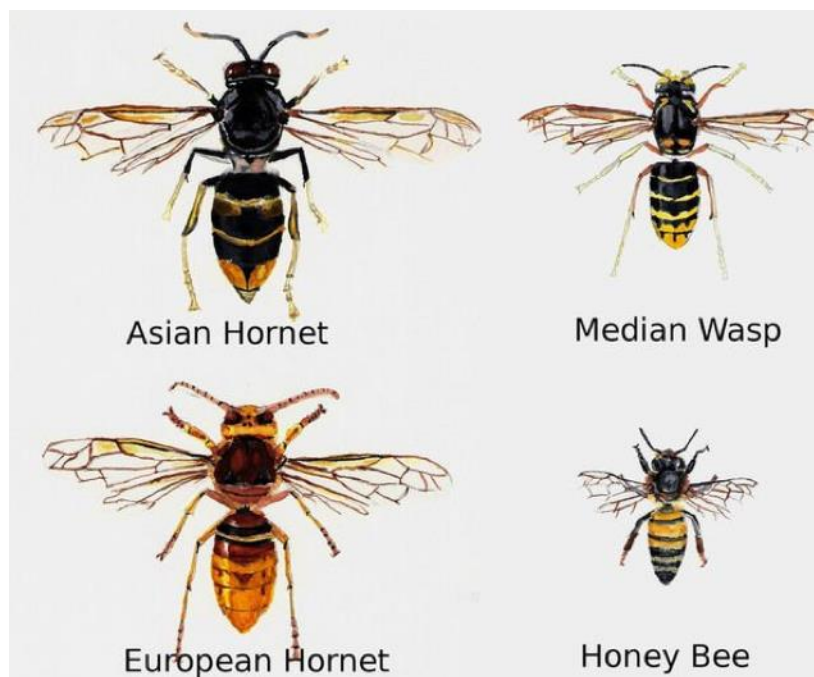
Spring is well and truly upon us, there's a real buzz in the air that's getting louder by the day, as is the impending fear that again I am nowhere near as prepared as I would like to be for the fast approaching bee season.

The recent fine weather gave me good reason to go and visit the girls and say hello. Thankfully 'tending to livestock' is a reasonable excuse to leave the house under the Coronavirus guidelines, this gives me a moments peace from the two screaming children at home who are quickly mastering the act of climbing the walls.

My hives are currently situated in Taplow about 30 minutes from Chiswick or 20 miles as the bee flies. I am hopeful that they will soon be able to call Strand On The Green home, this is due to a couple of generous offers to relocate them to pastures new and I'm hopeful this will be the case in time for the autumn edition of SIGNALS.

The biggest threat to our colonies this year is the invasion of the Asian Hornet who predate on the honey bee and cause significant colony loss as a direct result. The Asian Hornet arrived from mainland Europe in 2016 and there have been 17 confirmed sightings and 9 nests destroyed in the UK since then.

You can email alernonnative@ceh.ac.uk if you believe you've sighted an Asian hornet, try and get a photo as this will make identifying them a lot easier.





www.strandonthegreen.org.uk

<https://www.facebook.com/groups/www.strandonthegreen.org.uk>

Contact the chairman – rsg.soga@hotmail.co.uk

SoGA 
Strand on the Green Association